

DUCIS

沖床模具光電安全檢出裝置
PHOTOELECTRIC SAFETY STOP CONTROLLER

SD-101/201

安裝使用說明書
OPERATION MANUAL

SD-101光電主機
SD-101 Photo-Electro Main Unit
SD-201物品通過檢知
SD-201 Parts Passing Through Inspector

總公司：台北市長安東路二段189號7樓之8
7F-8, NO. 189, Sec. 2, Cheng An E. Rd, Taipei Taiwan
TEL:886-2-27402184 · 27215821 FAX:886-2-27311002
<http://www.ducis.com.tw> E-mail:ducis@yahoo.com.tw
東莞服務處:TEL:86-769-85305424-5 FAX:86-769-85305423
蘇州服務處:TEL:86-512-57764867 FAX:86-512-57764866

目 錄

- 一、機台各部名稱
- 二、操作說明
- 三、產品規格
- 四、產品週邊配件

產品保證書保證內容

- 1.憑本保證書，自購買日起壹年內免費服務。
- 2.保證期間因下列情形而發生故障者，本公司酌收材料工本費。
 - (1)因天災地變等所導致者。
 - (2)因人為疏忽，即非機台本身引起，而導致機台故障者
- 3.如在機台使用上有任何問題，請來電諮詢。
 - (1)台北總公司 TEL：02-2740-2184
 - (2)東莞長安辦事處 TEL：00286-769-530-5454~5
 - (3)上海昆山辦事處 TEL：00286-512-5732-1152

DUCIS 申皓企業有限公司

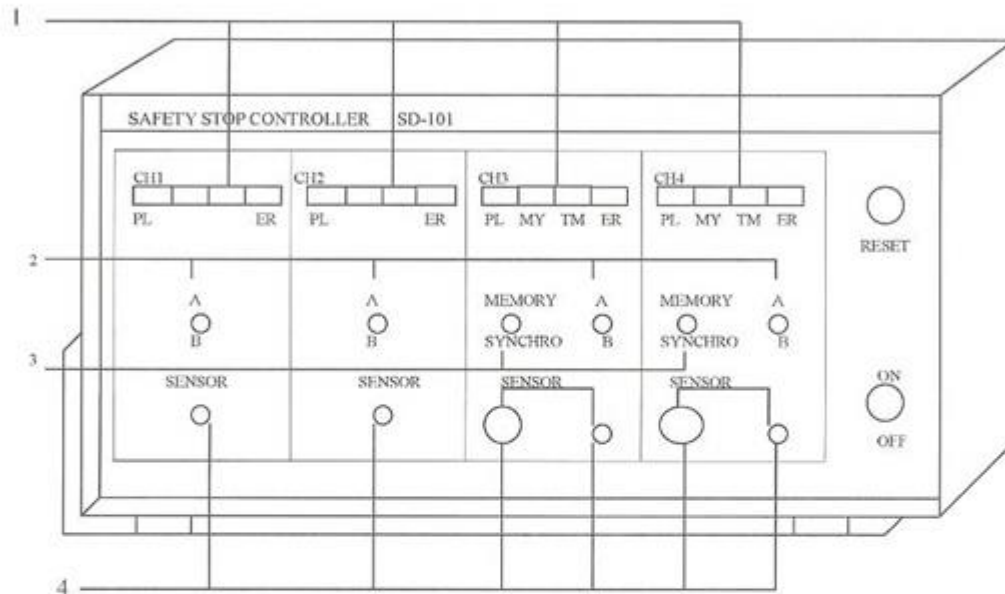
台北總公司：台北市長安東路二段189號7樓之8

TEL:02-2740-2184 FAX:02-2721-5932

東莞長安辦事處 TEL：00286-769-5305424-5 FAX：00286-769-5305456

上海昆山辦事處 TEL：00286-512-57321152 FAX：00286-512-57311826

一. 機台各部名稱



- 1.顯示器：顯示、電源、記憶、同期、異常燈。
Led display: to show, power, memorial, abnormal light.
- 2.A、B切換開關：依檢測物品功能做切換。
Conversion switch of "A"and"B"：conversion by test articles function.
- 3.記憶、同期切換開關：依檢測功能物品做切換。
Conversion switch of "Memorial" and"Meantime"：conversion by test articles function.
- 4.檢測訊號輸入座：連接檢測器材之輸入孔。
Test signal input seat: joint input hole of test material.

二. 操作說明

SD-101主機裝機說明如下：

SD-101 Main Unit Installed Description:

(一) 主機接線方式：

Main Unit Wiring Connection:

插頭插入時有 6 條線分別為：

There are 6 lines when the plug plug-in, they are:

(1) 號碼 ① ② 電源插頭85V到240V都可以，此機台為自動變壓。

No.1 2 are power plug voltage available from 85V to 240V, it is auto adjust.

(2) 號碼 ③ ④ ⑤ 為停機線，端子 ③ ④ 為常開接法。

③ ⑤ 為常閉接法。

No.3 4 5 are machine stop lines. Terminal 3 4 are Usual ON connection

Terminal 3 5 are Usual OFF connection

(3) 號碼 ⑥ 為地線(此線務必一定要接地線)。

No.6 is grounded (this line must be connected to the ground)

(二) 凸輪的接法有以下兩種：

2 connection methods for the Cam:

(1) 是直接插入SD-101光電主機後面面版CH3同期輸入位置，此時另一端2條線直接接上沖床預備用的凸輪位置（時間設定最好是三點鐘方向）。

Direct plug into Back Panel CH3 of SD-101 Photo-Electro main unit also Input location, meanwhile, the other end of 2 lines direct plug onto stamping Machine where the spare cam position (the time setting preferred 3 o'clock direction)

(2) 另一種接法是SD-101光電主機後面面版插入金色（DC12）、白色（CH3）位置，此時另一端為小近接開關，則接上沖床凸輪訊號旁邊凸出的部份，固定上凸輪，然後鎖上近接就完成(時間也一樣固定為1點到3點鐘方向即可)。

Another method is to plug into Gold color (DC12), White (CH3) position of the SD-101 back side panel, meantime, the other end is a smaller photo-eyes switch which connect to the bulge area where beside the stamping machine cam signal, then clip on the cam and lock on the photo-eyes switch (the time setting is preferred 1~3 o'clock direction)

主機面板使用方式如下：

Main Unit Front Panel operation Manual:

(一) CH1：CH2開關撥入上A時，感測棒碰到時機器會停。開關撥入B時，感測棒接觸沖床，保持著離開會停。(A和B作用相反)

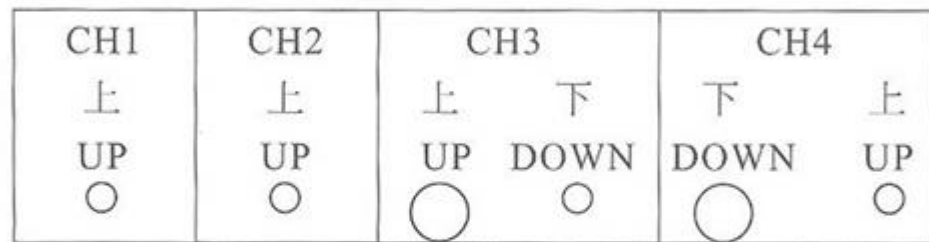
CH1:When CH2 switch switches to UP-A, the sensing bar hits to the unit then the unit will stop, when switches to B, the sensing bar touches to the machine, keeps on Leave-It-Stop (A and B are opposite operation)

(二) 當需要使用物品通過時：

When need parts passing through inspect:

SD-201型物品通過操作說明如下：

SD-201 passing through operation:



CH3 為使用時：插入為電眼物品通過檢知開關的使用方法。
(開關為上、下)

CH3 is set to use: When Plug in, It is the operation method for Photo-Eyes passing through switch purpose(Switch code is UP, DOWN)

CH4為不使用時：開關為下、上。

CH4 is set to non-use: Switch code is Down, UP)

1.SD-101：光電主機未使用時的撥法

SD-101：Photo-Electro Main Unit Non-Use Switching Method

CH1	CH2	CH3	CH4
上	上	下 上	下 上
UP	UP	Down Up	Down Up
0	0	0 0	0 0
擠料檢知	擠料檢知	未使用時	未使用時
Jammed Sensor	Jammed Sensor	Non-Use	Non-Use
開關撥法		開關撥法	開關撥法
Switching Method		Switching Method	Switching Method

2.SD-201：光電通過檢知使用方式

SD-201：Operation of Photo-Electro Passing Through Inspector

CH1	CH2	CH3	CH4
上 UP 0	上 UP 0	上 下 UP Down 0 0	下 上 Down UP 0 0
擠料檢知 Jammed Sensor 開關撥法 Switching Method	擠料檢知 Jammed Sensor	SD-201 通過檢知開 關撥法 SD-201 Passing Through Switching Method	未使用時 Non-Use 開關撥法 Switching Method

3.在末端使用（感測棒、微動開關、近接開關、光纖照射）的檢知方式： Inspecting Method of Bottom End Using (Sensing Bar, Micro Switch, Photo-Eyes, Optical Fiber Flash)

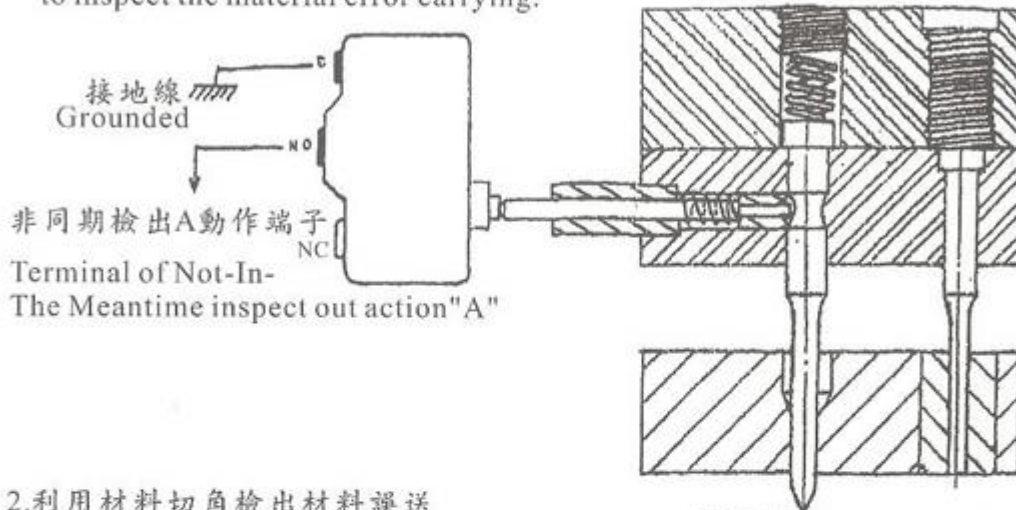
CH1	CH2	CH3	CH4
上 UP 0	上 UP 0	下 上 Down UP 0 0	下 下 Down Down 0 0
擠料檢知 Jammed Sensor 開關撥法 Switching Method	擠料檢知 Jammed Sensor 開關撥法 Switching Method	未使用時 Non-Use 開關撥法 Switching Method	材料確認設置 Material Ensured 開關撥法 Switching Method 光纖及近接電眼使 用方式 Setup Switching Optical Fiber & Photo-Eyes (末端檢知) (Bottom End sensing)

※注意事項： ATTENTION：

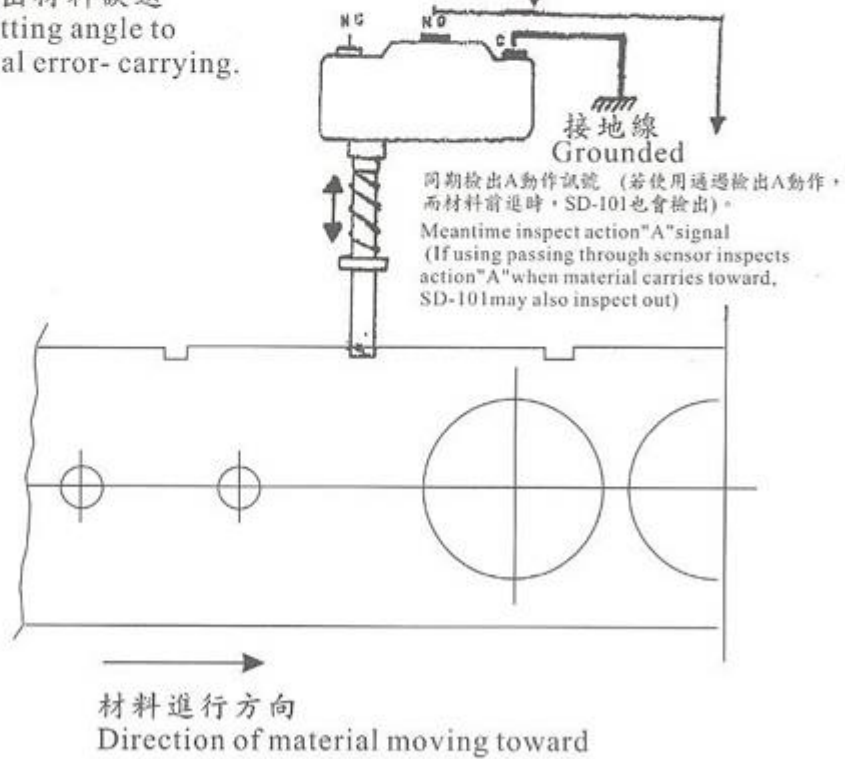
- (1)請注意SD-201通過檢出撥法為左上、右下，而且通過精度調到6的位置比較適中。
SD-201 Passing Through Inspect, the switching method is Left-Up, Right-Down, the passing thru accuracy switch to area"6"will be suitable.
- (2)凸輪設定角度設定要領為角度設定愈短愈好，而固定之角度時間一定是上列全部動作完成後的角度時間。
The degree of angle of the cam setup should be as shorter as better, the time of the fixed angle must be the above actions are all completed.
- (3)如果通過時異常無法復歸，請將電源暫時關掉，同期黃色燈角度離開時再開機，機台就可以動作。
If abnormal passing can not be resumed, please temporary witch-off the power also await the yellow color of the light off then power-on the machine.
- (4)通過檢知SD-201第一次使用時切記記憶燈要亮，機械才會允許下一個沖床動作。
The first time using SD-201 passing through inspector, please be noted that memorial light must light up thereafter the machine will allow next operation instruction from the stamping machine.
- (5)使用(感測棒、微動開關、近接電眼、光纖照射)材料確認設置時，開關撥法為右下、左下，凸輪角度設定時間一定是材料確定送到正確位置以後之設定角度。
When using (Sensing Bar, Micro Switch, Photo-Eyes, Optical Fiber Flashing) material ensure device, the switch switching will be Right-Down, Left-Down, the cam degree setting time should be the set degree after the material carrying on to the right location.

SD-101之應用例
Application Example of SD-101

1. 利用上模引導沖檢出材料誤送
Using the top die carrying punch to inspect the material error carrying.

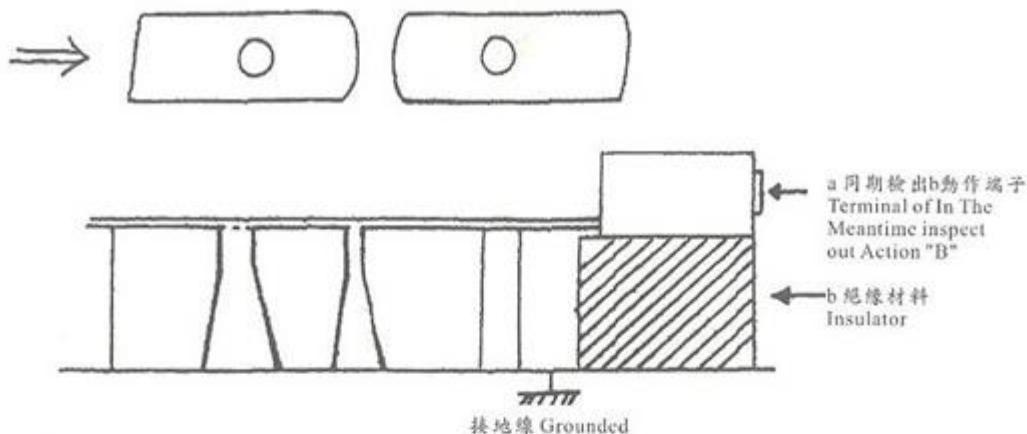


2. 利用材料切角檢出材料誤送
Using material cutting angle to inspect the material error- carrying.



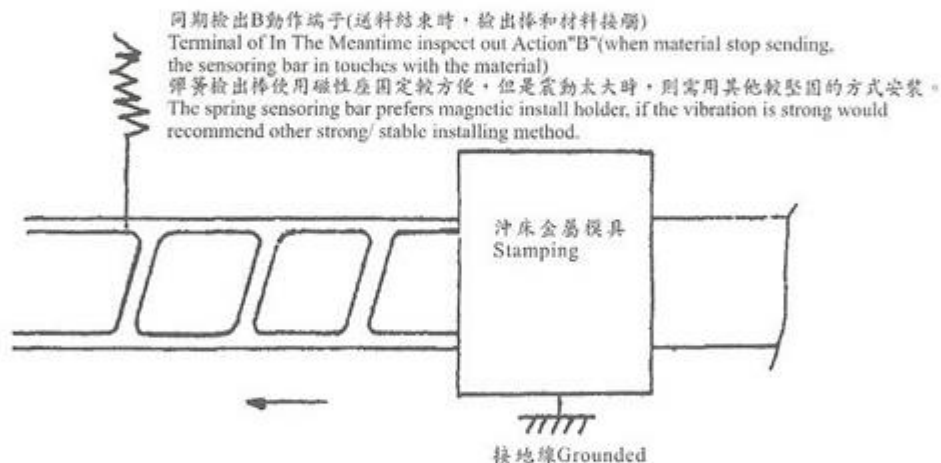
3. 利用定位擋板檢出材料誤送

Using the locating plate to inspect out material error carrying.



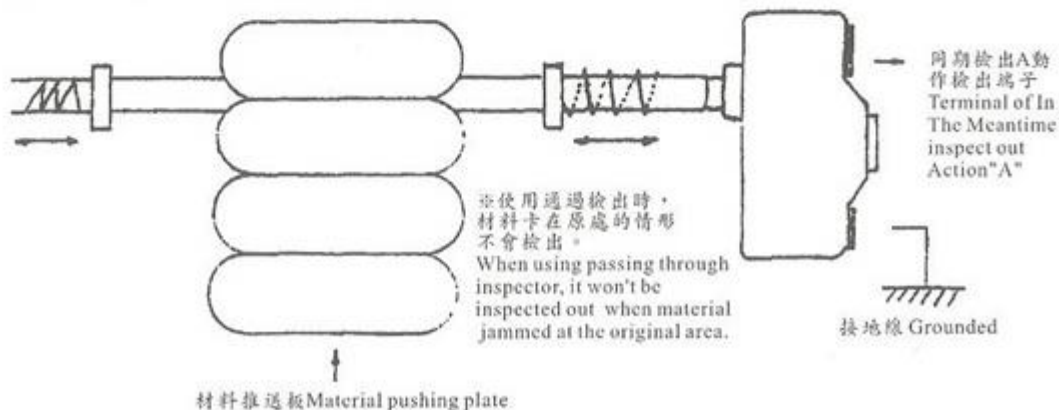
4. 用彈簧檢出棒檢出材料誤送

Using Spring Sensoring Bar to inspect material error-carrying.

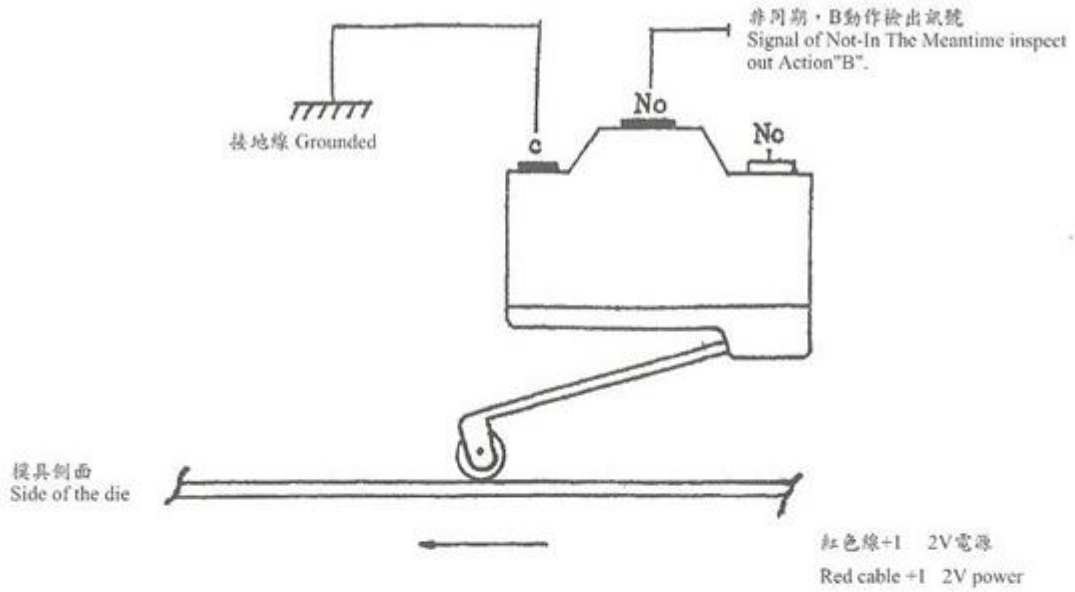


5. 使用推板檢出材料誤送

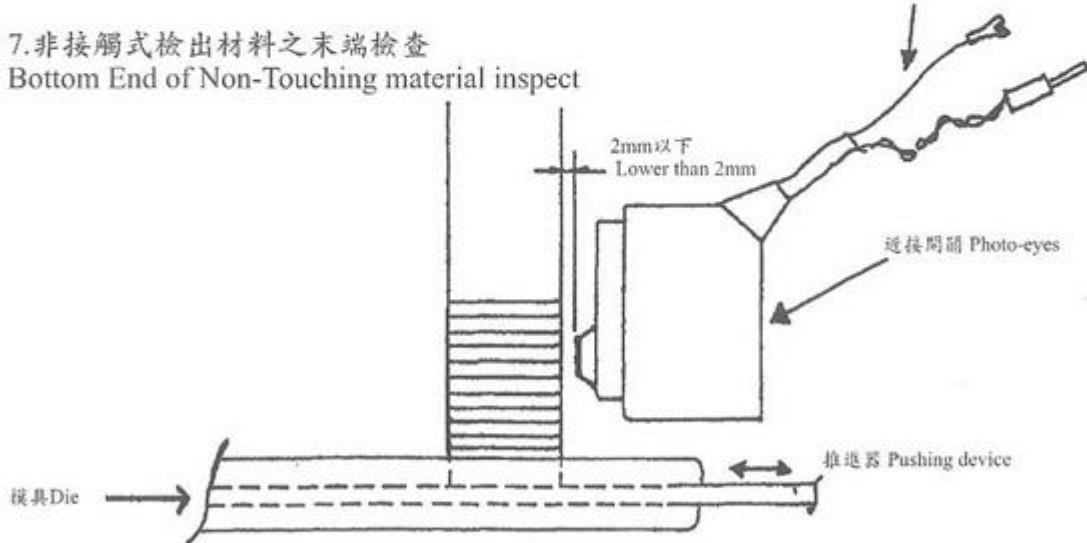
Using Pushing Plate to inspect out material error-carrying.



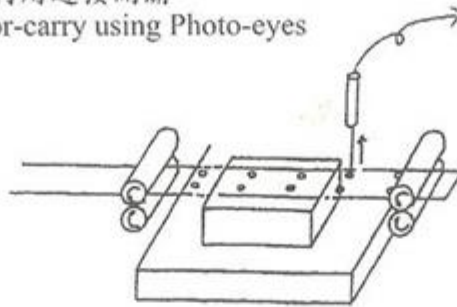
6. 材料末端檢出
Bottom End material inspect.



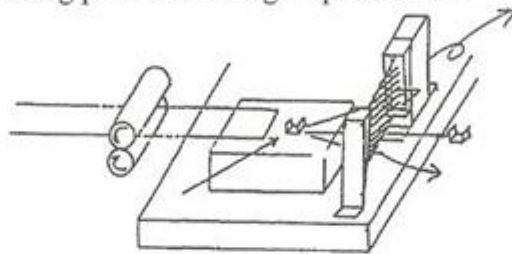
7. 非接觸式檢出材料之末端檢查
Bottom End of Non-Touching material inspect



材料誤送 利用近接開關
Material error-carry using Photo-eyes

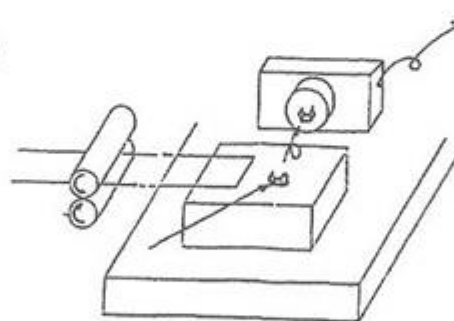


排出確認 利用光幕式通過SENSOR
Eject confirm using photo screening inspect sensor.



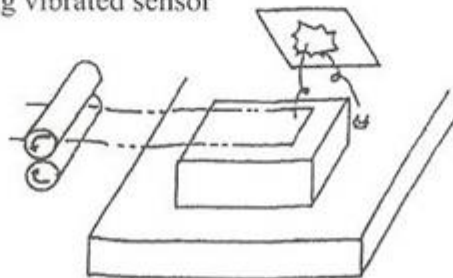
排出之成品
Eject product

排出確認
Eject confirm

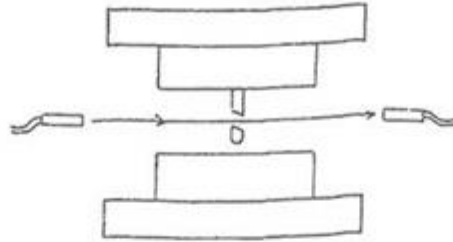


磁性感測SENSOR只對磁性金屬有效

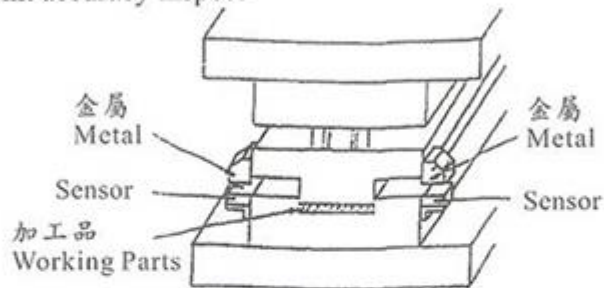
排出確認 利用振動Sensor
Eject confirm using vibrated sensor



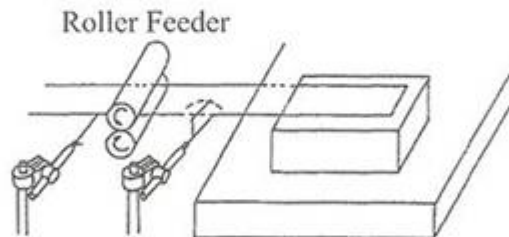
斷針檢查 利用透過型光電開關
Broken pin inspect using crossing type of Photo-electro Switch.



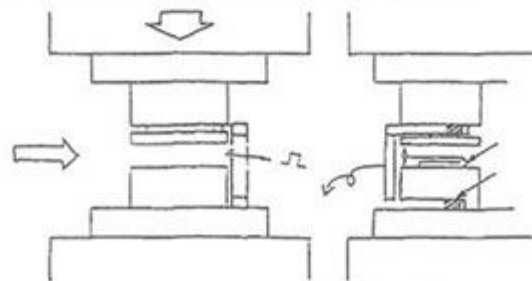
下死點精度檢查
Dead point accuracy inspect



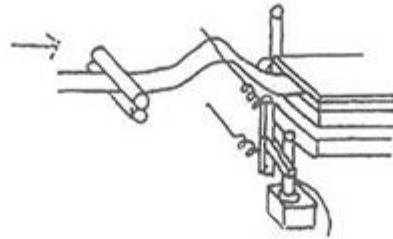
擠料 利用彈簧棒(前端可彎曲)
Material Jammed using Spring Bar (the front tip flexible)



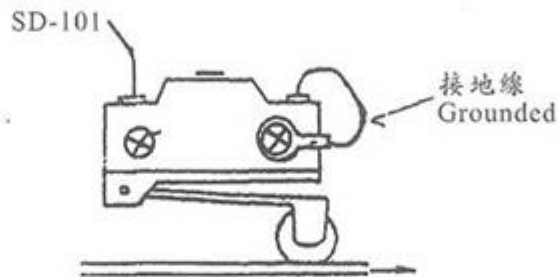
排出確認 利用U字型光電開關
Eject Confirm Using "U" style Photo-electro Switch



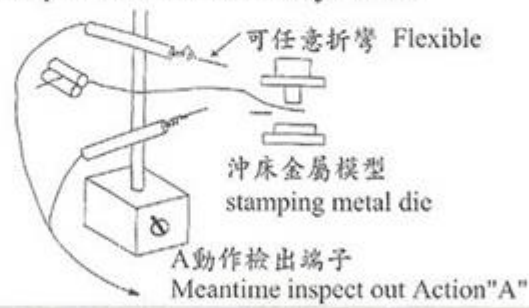
擠料 利用彈簧棒
Material jammed using Spring Bar



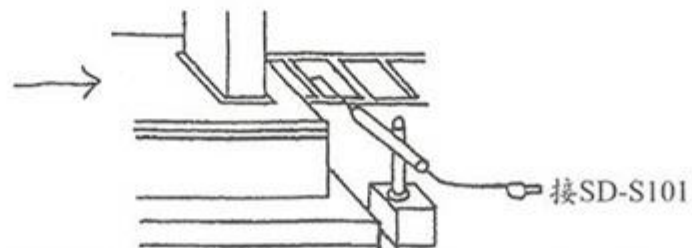
材料末端 利用微動開關
Material end using Micro-Switch

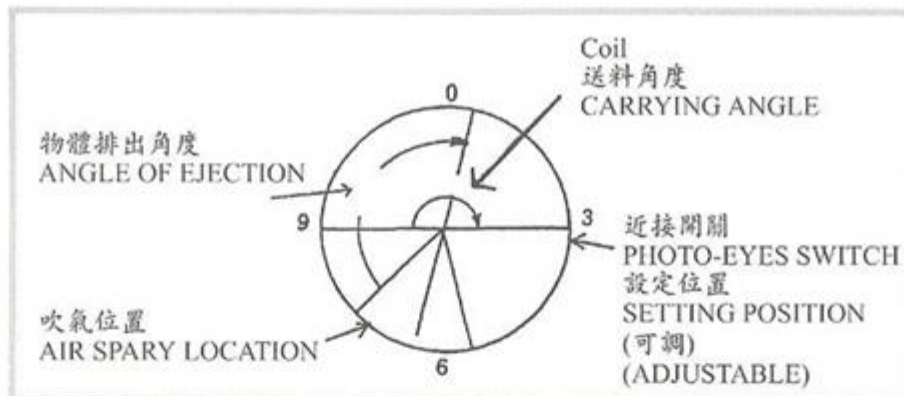


以彈簧棒檢出曲折擠料
Using Spring Bar to inspect tortuous material jammed

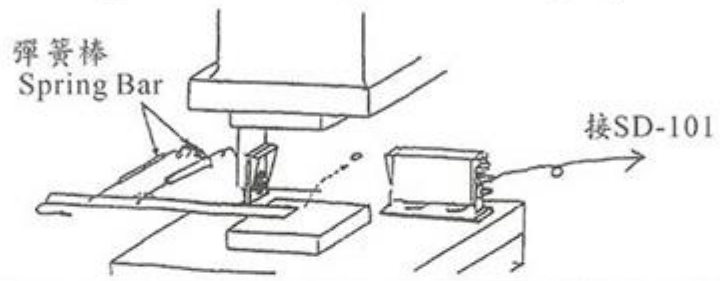


材料誤送 利用彈簧棒
Material error-carry using Spring Bar

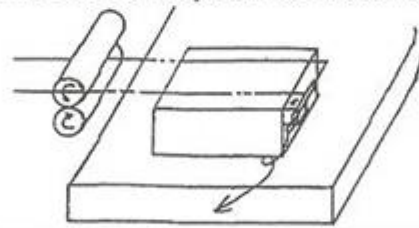




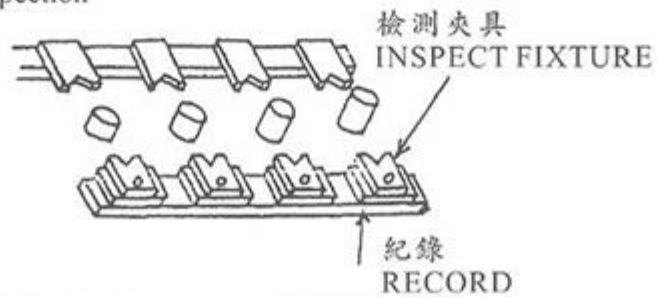
排出確認 利用SD-101或SD-201，光幕式通過檢測SENSOR
Eject confirm using SD-101 or SD201, Photo Screening inspect sensor



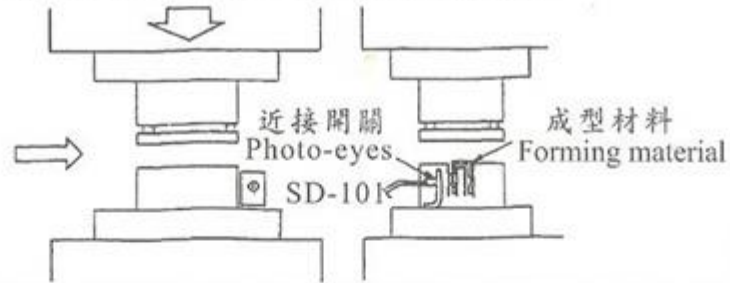
材料誤送 利用末端接地(檢測點製造模具時可裝上，須要紀錄方能使用)
Material error0carry using bottom end grounded (inspect point may be installed, when the die developed, must record before used)



定位檢查
Positioning inspection

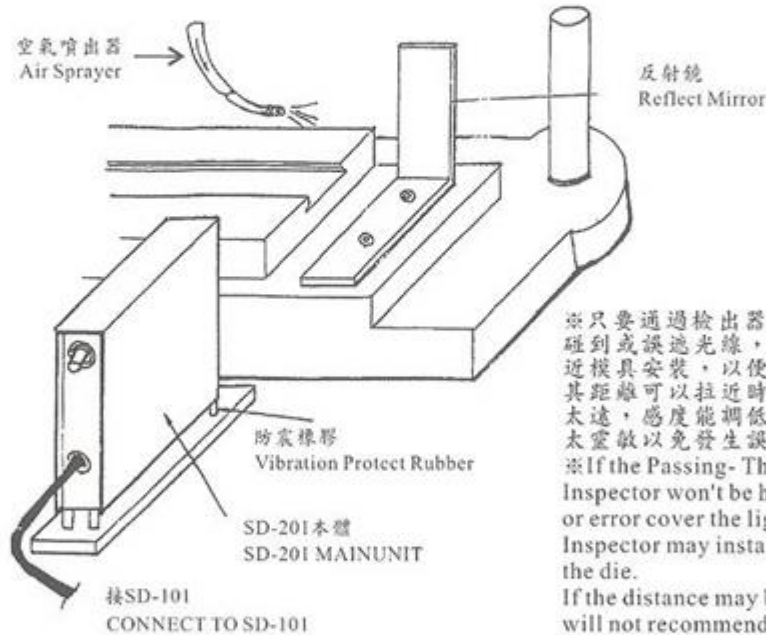


材料誤送或製品排出均可
For either material error-carry or working parts ejection



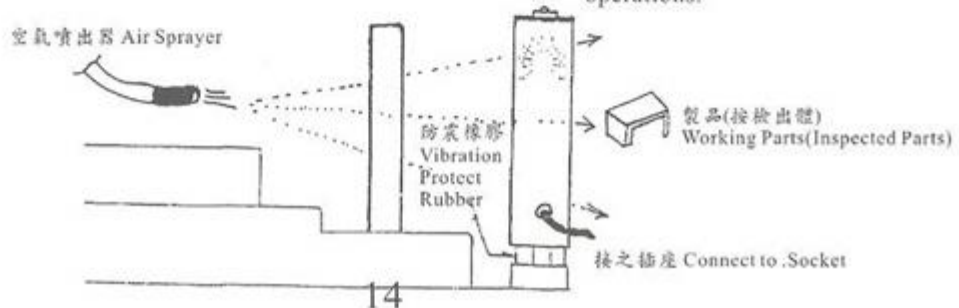
通過確認檢出器之應用例 Example of Passing- Through Inspector Application.

例：1
EX:1



※只要通過檢出器不會被模具
碰到或誤近其距離太靈敏
以免發生誤動作。
※If the Passing-Through
Inspector won't be hit by the die
or error cover the light then
the Inspector may install closer
to the die.
If the distance may be shorten,
will not recommend to install to
far away. If the sensitivity may
be adjusted lower, will not
recommend to set it as too
sensitive to prevent the error
operations.

例：2
EX:2



三. 產品規格

SD-101產品規格表

SD-101	
檢出回路	4CH. 獨立檢出
選擇切換	A/B 記憶/同期
反應時間	ON 檢出 3 μ 、OFF 檢出 300 μ 以下
使用電壓	AC 85V~240V、50/60Hz \pm 10%
消耗電力	16W 以下
輸出信號	繼電器/A/B (220V 3A)
延遲時間	10ms 以內
周圍溫度	0 $^{\circ}$ C~40 $^{\circ}$ C
輸入信號	DC12V、檢測裝置
標準配件	感測棒 4 枝
外形尺寸	175W*212L*100H
重 量	2.65kg

SD-101 Specification

SD-101	
Channel	4 channel individually
Switches	A/B, memory/synchro
Response time	"ON" check: 3 μ OFF CHECK: <300 μ
Power	AC 110/220V 50/60Hz \pm 10%
Power consumption	<16W
Output signal	Relay/A/B (220V 3A)
Delayed time	1 <10mS
Applicable temperature	0 $^{\circ}$ C 40 $^{\circ}$ C
Input Signal	DC12V, detecting device
Speed	2000 S P M
Dimension	175W*212L*100H
Weight	2.65kg

SD-201/202產品規格表

SD - 201/202	
檢出幅	SD-201最大150mm/SD-202最大100mm(紅外線偵測)
最小檢出	φ2mm(距離設定0.5m)不透明體
檢出距離	500mm 以內
電源電壓	DC 12V~24V(±10%)
消耗電力	60 mA 以下
輸出指示	(綠色)電源、紅色 (通過表示)
感度調整	依檢測物大小調整
周圍溫度	0°C~40°C
反應速度	1m sec 以下
連接線長	2.5M
外形尺寸	40W*210L*180H
重 量	本體 1.2kg 反射板 0.3kg

SD-201/202 Specification

SD - 201/202	
Checking amplitude	SD 201 150mm Max / SD 202 100mm Max
Minimum check	φ2mm(checking distance:0.5m) opacity
Checking distance	<500mm
Power	DC 12V~24V(±10%)
Power consumption	<60 mA
Indicating lamp	"Green" : Power, "Red" : Go
Sensibility	Adjusted by the shape of material and distance
Applicable temperature	0°C~40°C
Response speed	<1m sec
Length of joint cable	2.5M
Dimension	40W*210L*180H
Weight	Main unit :1.2kg, Reflective plate:0.3kg

四.產品標準配件

SD - 101	
編號	標準配件名稱
SD1015	紅色偵測棒 4支 Detecting rod 4pcs
SD1017	六蕊訊號線及近接開關 1組 Proximity switch 1set
SD1018	預備凸輪線 1條 Length of join cable 1pcs

DUCIS

沖床模具光電安全檢出裝置
PHOTOELECTRIC SAFETY STOP CONTROLLER

SD-102/201
安裝使用說明書
OPERATION MANUAL

SD-102 光電主機

SD-102 Photo-Electro Main Unit

SD-201物品通過檢知

SD-201 Parts Passing Through Inspector

總公司：台北市長安東路二段189號7樓之8
7F-8, NO. 189, Sec. 2, Chang An E. Rd, Taipei Taiwan
TEL:886-2-27402184 · 27215821 FAX 886-2-27215821
<http://www.ducis.com.tw> E-mail:ducis3@yahoo.com.tw
東莞服務處:TEL:86-769-85305424-5 FAX:86-769-85305423
蘇州服務處:TEL:86-512-57764967 FAX:86-512-57764965

目 錄

- 一、機台各部名稱
- 二、操作說明
- 三、產品規格
- 四、產品週邊配件

產品保證書保證內容

- 1.憑本保證書，自購買日起壹年內免費服務。
- 2.保證期間因下列情形而發生故障者，本公司酌收材料工本費。
 - (1)因天災地變等所導致者。
 - (2)因人為疏忽，即非機台本身引起，而導致機台故障者
- 3.如在機台使用上有任何問題，請來電諮詢。
 - (1)台北總公司 TEL:02-2740-2184
 - (2)東莞長安辦事處 TEL:00286-769-530-5454~5
 - (3)上海昆山辦事處 TEL:00286-512-5732-1152

DUCIS 申皓企業有限公司

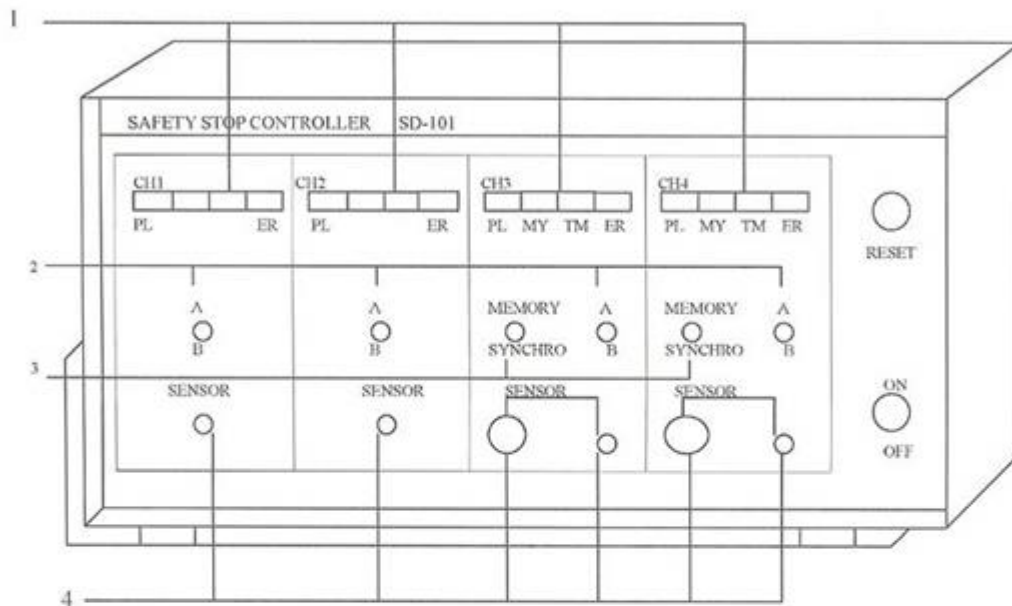
台北總公司：台北市長安東路二段189號7樓之8

TEL:02-2740-2184 FAX:02-2721-5932

東莞長安辦事處 TEL:00286-769-5305424-5 FAX:00286-769-5305456

上海昆山辦事處 TEL:00286-512-57321152 FAX:00286-512-57311826

一. 機台各部名稱



- 1.顯示器：顯示、電源、記憶、同期、異常燈。
Led display: to show, power, memorial, abnormal light.
- 2.A、B切換開關：依檢測物品功能做切換。
Conversion switch of "A"and"B"：conversion by test articles function.
- 3.記憶、同期切換開關：依檢測功能物品做切換。
Conversion switch of "Memorial" and"Meantime"：conversion by test articles function.
- 4.檢測訊號輸入座：連接檢測器材之輸入孔。
Test signal input seat: joint input hole of test material.

二. 操作說明

SD-102主機裝機說明如下：

SD-102 Main Unit Installed Description:

(一) 主機接線方式：

Main Unit Wiring Connection:

插頭插入時有 6 條線分別為：

There are 6 lines when the plug plug-in, they are:

(1) 號碼 ① ② 電源插頭85V到240V都可以，此機台為自動變壓。

No.1 2 are power plug voltage available from 85V to 240V, it is auto adjust.

(2) 號碼 ③ ④ ⑤ 為停機線，端子 ③ ④ 為常開接法。

③ ⑤ 為常閉接法。

No.3 4 5 are machine stop lines. Terminal 3 4 are Usual ON connection

Terminal 3 5 are Usual OFF connection

(3) 號碼 ⑥ 為地線(此線務必一定要接地線)。

No.6 is grounded (this line must be connected to the ground)

(二) 凸輪的接法有以下兩種：

2 connection methods for the Cam:

(1) 是直接插入SD-101光電主機後面面版CH3同期輸入位置，此時另一端2條線直接接上沖床預備用的凸輪位置（時間設定最好是三點鐘方向）。

Direct plug into Back Panel CH3 of SD-101 Photo-Electro main unit also Input location, meanwhile, the other end of 2 lines direct plug onto stamping Machine where the spare cam position (the time setting preferred 3 o'clock direction)

(2) 另一種接法是SD-101光電主機後面面版插入金色（DC12）、白色（CH3）位置，此時另一端為小近接開關，則接上沖床凸輪訊號旁邊凸出的部份，固定上凸輪，然後鎖上近接就完成(時間也一樣固定為1點到3點鐘方向即可)。

Another method is to plug into Gold color (DC12), White (CH3) position of the SD-101 back side panel, meantime, the other end is a smaller photo-eyes switch which connect to the bulge area where beside the stamping machine cam signal, then clip on the cam and lock on the photo-eyes switch (the time setting is preferred 1~3 o'clock direction)

主機面板使用方式如下：

Main Unit Front Panel operation Manual:

(一) CH1:CH2開關撥入上A時，感測棒碰到時機器會停。開關撥入B時，感測棒接觸沖床，保持著離開會停。(A和B作用相反)

CH1:When CH2 switch switches to UP-A, the sensing bar hits to the unit then the unit will stop, when switches to B, the sensing bar touches to the machine, keeps on Leave-It-Stop (A and B are opposite operation)

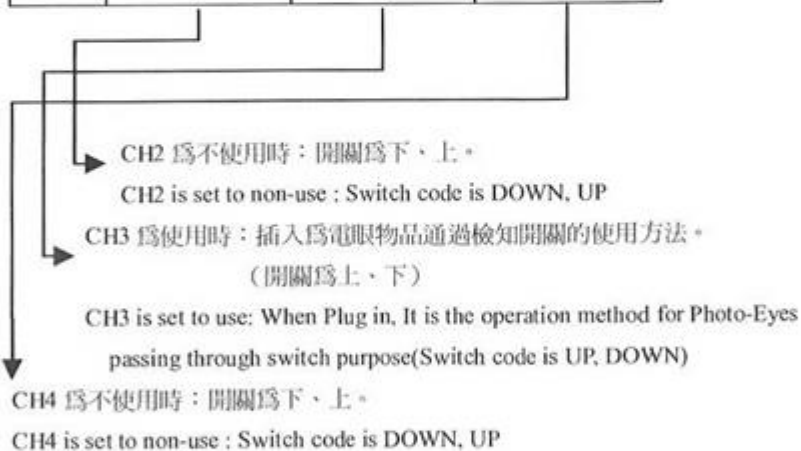
(二) 當需要使用物品通過時：

When need parts passing through inspect:

SD-201型物品通過操作說明如下：

SD-201 passing through operation:

CH1	CH2		CH3		CH4	
上	下	上	上	下	下	上
UP	DOWN	UP	UP	DOWN	DOWN	UP
○	○	○	○	○	○	○



1. SD-102：光電主機未使用時的撥法

SD-102: Photo-Electro Main Unit Non-Use Switching Method

CH1	CH2		CH3		CH4	
上	下	上	上	下	下	上
UP	DOWN	UP	UP	DOWN	DOWN	UP
○	○	○	○	○	○	○
攔料檢知 Jammed Sensor	未使用時 Non-Use		未使用時 Non-Use		未使用時 Non-Use	
開關撥法 Switching Method	開關撥法 Switching Method		開關撥法 Switching Method		開關撥法 Switching Method	

2.SD-201：光電通過檢知使用方式

SD-201：Operation of Photo-Electro Passing Through Inspector

CH1	CH2	CH3	CH4
上	下	上	下
UP	DOWN	UP	DOWN
○	○	○	○
擠料檢知	未使用時	SD-201 通過檢知	未使用時
Jammed Sensor	Non-Use	開關撥法	Non-Use
開關撥法	開關撥法	SD-201 Passing	開關撥法
Switchine	Switchine Method	Through Switchine	Switchine Method

3.在末端使用（感測棒、微動開關、近接開關、光纖照射）的檢知方式： Inspecting Method of Bottom End Using (Sensing Bar, Micro Switch, Photo-Eyes, Optical Fiber Flash)

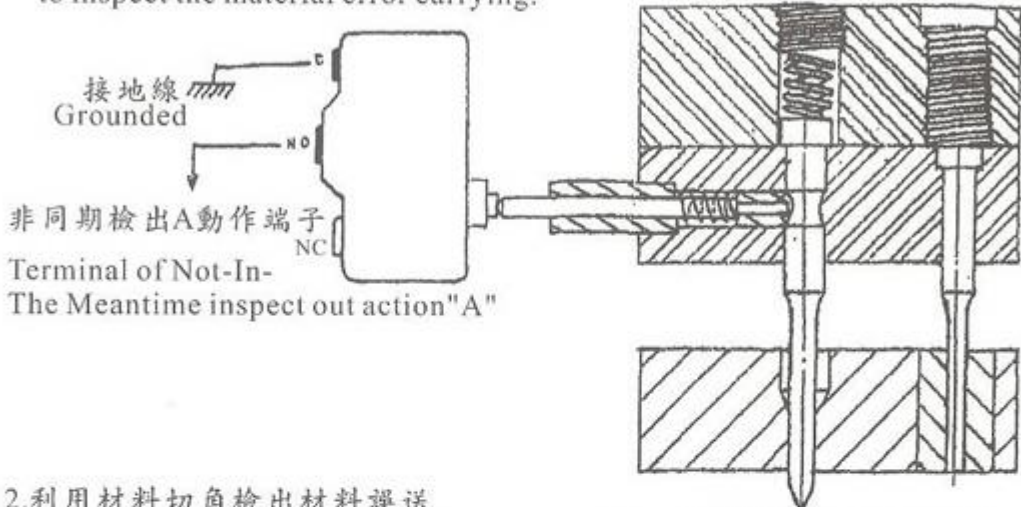
CH1	CH2	CH3	CH4
↑	下	↑	下
UP	DOWN	UP	DOWN
○	○	○	○
擠料檢知	未使用時	未使用時	材料確認設置
Jammed Sensor	Non-Use	Non-Use	Material Ensured
開關撥法	開關撥法	開關撥法	開關撥法
Switchine Method	Switchine Method	Switchine Method	Switchine Method
			光纖及近接電眼 使用方式 Setup Switchine Optical Fiber & Photo-End (末料檢知) (Bottom End sensorine)

※注意事項：
ATTENTION：

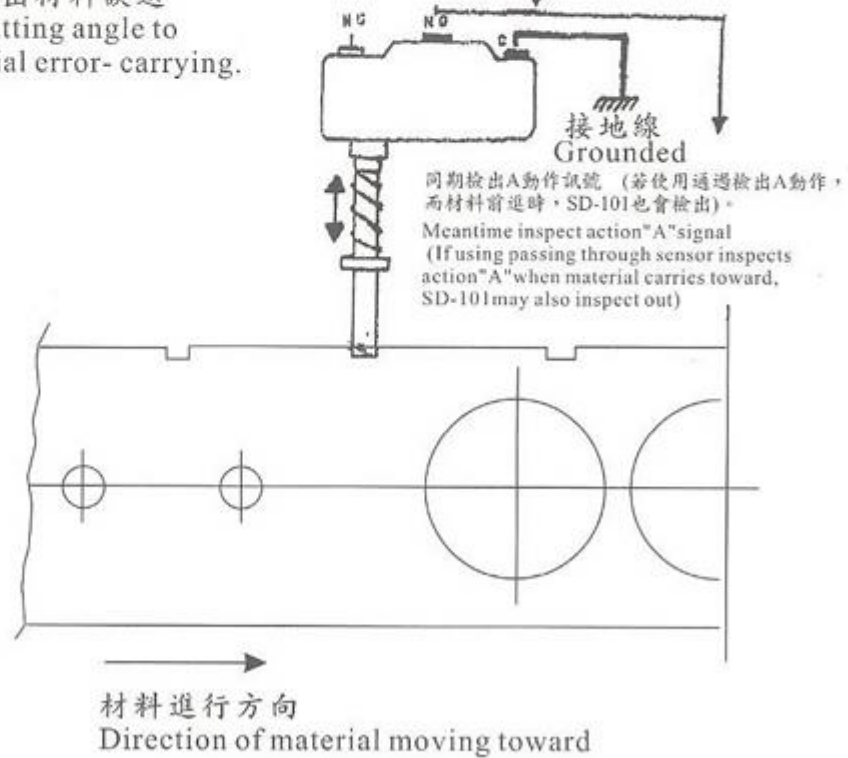
- 請注意SD-201通過檢出撥法為左上、右下，而且通過精度調到6的位置比較適中。
SD-201 Passing Through Inspect, the switching method is Left-Up, Right-Down, the passing thru accuracy switch to area"6" will be suitable.
- 凸輪設定角度設定要領為角度設定愈短愈好，而固定之角度時間一定是上列全部動作完成後的角度時間。
The degree of angle of the cam setup should be as shorter as better, the time of the fixed angle must be the above actions are all completed.
- 如果通過時異常無法復歸，請將電源暫時關掉，同期黃色燈角度離開時再開機，機台就可以動作。
If abnormal passing can not be resumed, please temporary witch-off the power also await the yellow color of the light off then power-on the machine.
- 通過檢知SD-201第一次使用時切記記憶燈要亮，機械才會允許下一個沖床動作。
The first time using SD-201 passing through inspector, please be noted that memorial light must light up thereafter the machine will allow next operation instruction from the stamping machine.
- 使用(感測棒、微動開關、近接電眼、光纖照射)材料確認設置時，開關撥法為右下、左下，凸輪角度設定時間一定是材料確定送到正確位置以後之設定角度。
When using (Sensing Bar, Micro Switch, Photo-Eyes, Optical Fiber Flashing) material ensure device, the switch switching will be Right-Down, Left-Down, the cam degree setting time should be the set degree after the material carrying on to the right location.

SD-102之應用例
Application Example of SD-102

1. 利用上模引導沖檢出材料誤送
Using the top die carrying punch to inspect the material error carrying.

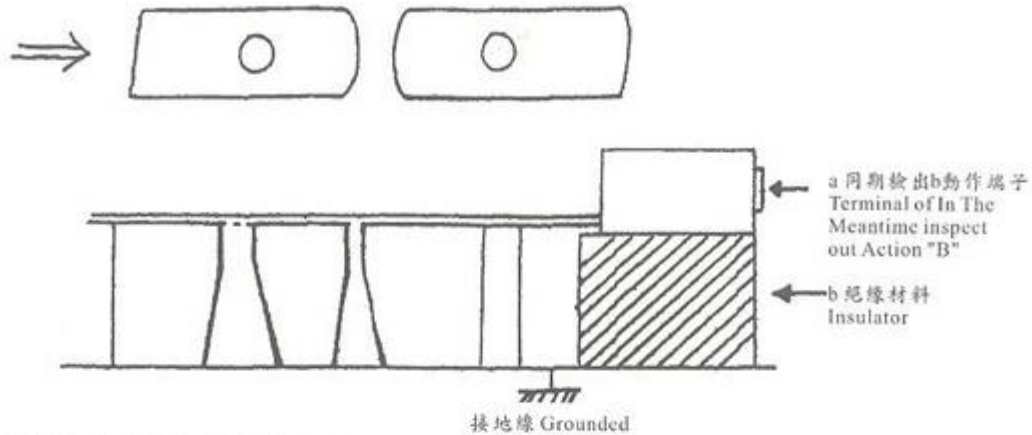


2. 利用材料切角檢出材料誤送
Using material cutting angle to inspect the material error-carrying.



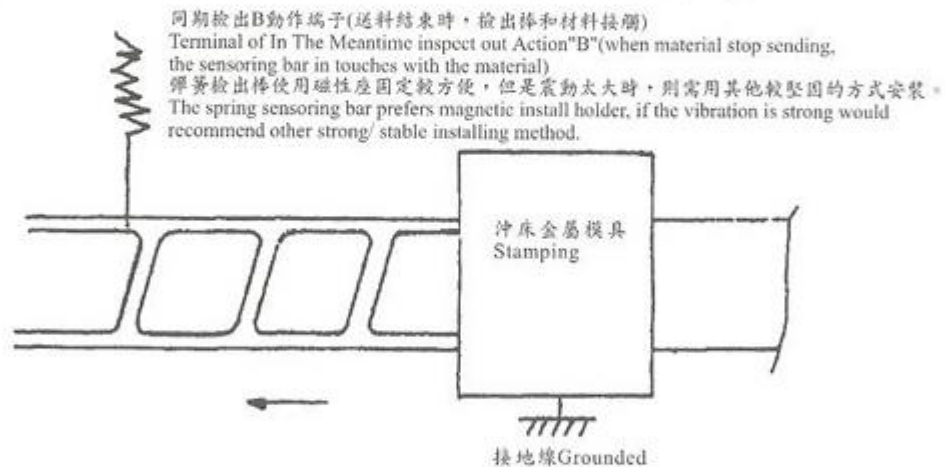
3. 利用定位擋板檢出材料誤送

Using the locating plate to inspect out material error carrying.



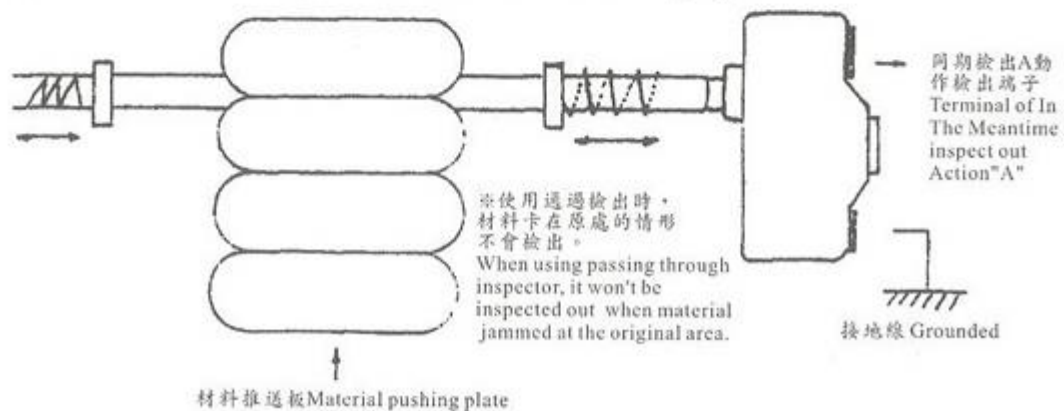
4. 用彈簧檢出棒檢出材料誤送

Using Spring Sensing Bar to inspect material error- carrying.

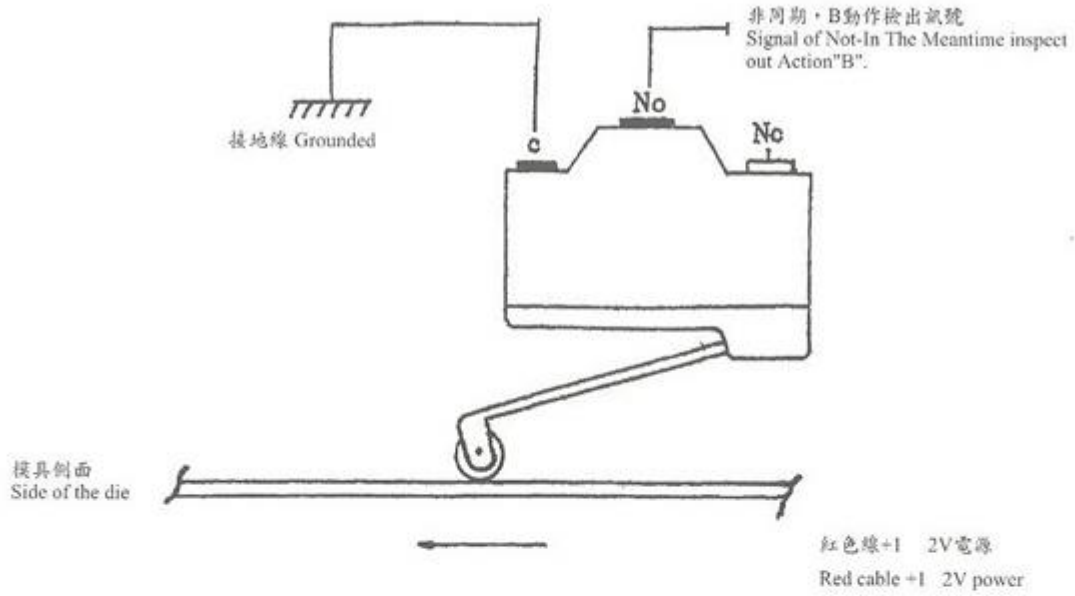


5. 使用推板檢出材料誤送

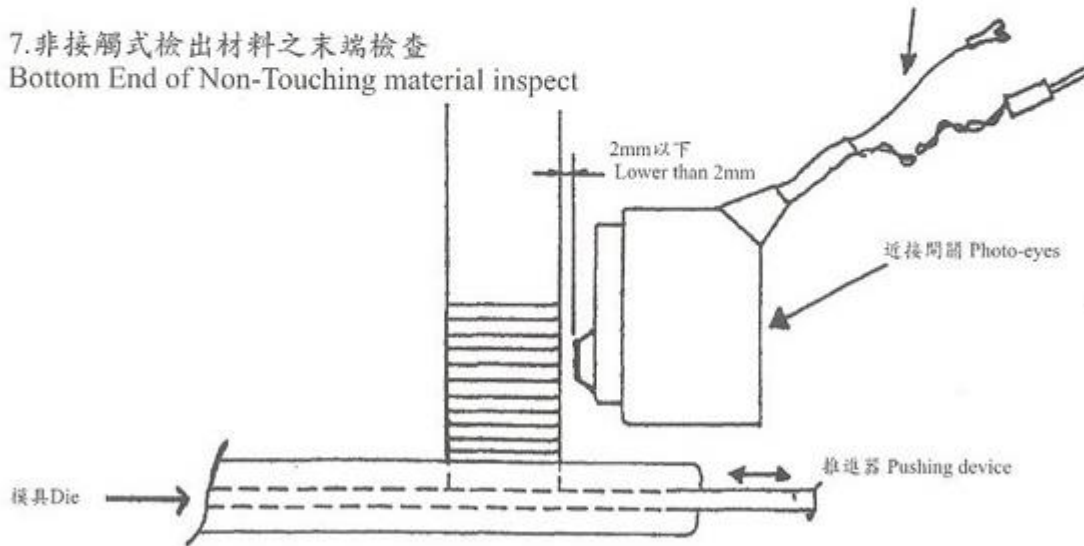
Using Pushing Plate to inspect out material error- carrying.



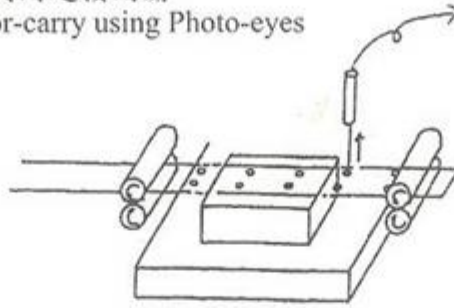
6.材料末端檢出
Bottom End material inspect.



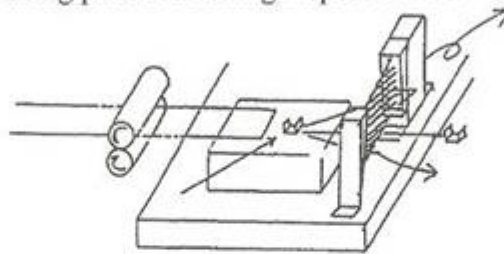
7.非接觸式檢出材料之末端檢查
Bottom End of Non-Touching material inspect



材料誤送 利用近接開關
Material error-carry using Photo-eyes

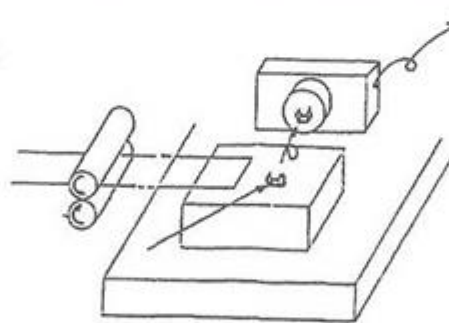


排出確認 利用光幕式通過SENSOR
Eject confirm using photo screening inspect sensor.



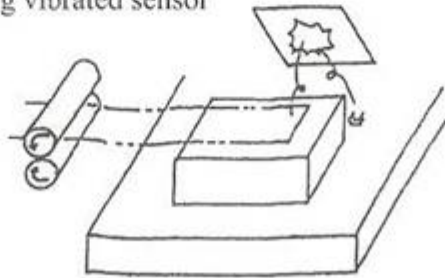
排出之成品
Eject product

排出確認
Eject confirm

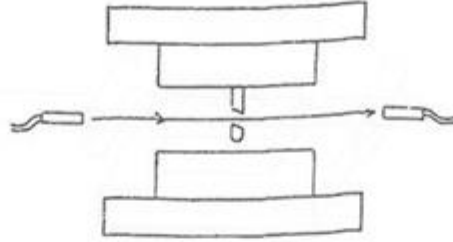


磁性感測SENSOR只對磁性金屬有效

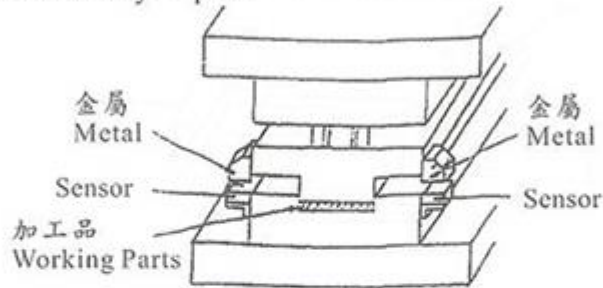
排出確認 利用振動Sensor
Eject confirm using vibrated sensor



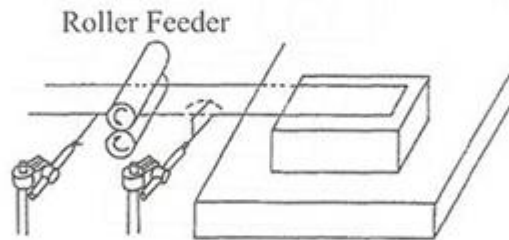
斷針檢查 利用透過型光電開關
Broken pin inspect using crossing type of Photo-electro Switch.



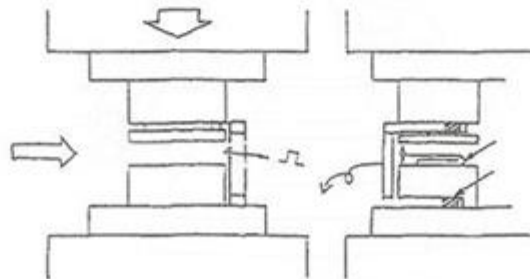
下死點精度檢查
Dead point accuracy inspect



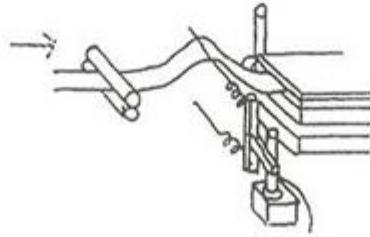
擠料 利用彈簧棒(前端可彎曲)
Material Jammed using Spring Bar (the front tip flexible)



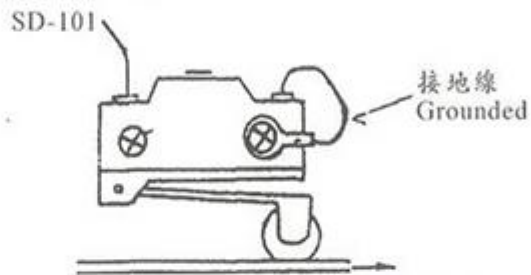
排出確認 利用U字型光電開關
Eject Confirm Using "U" style Photo-electro Switch



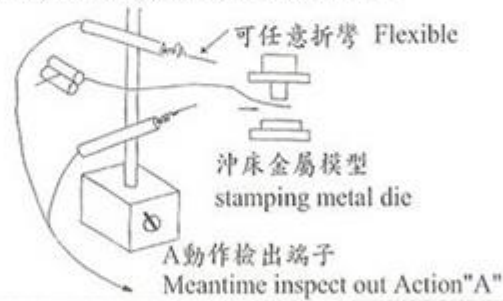
擠料 利用彈簧棒
Material jammed using Spring Bar



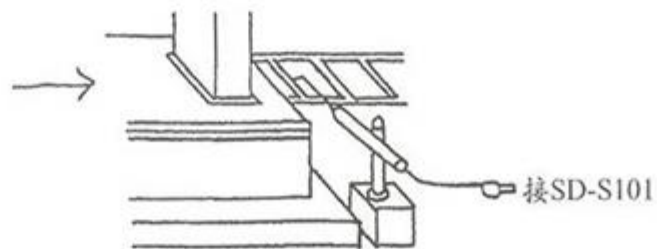
材料末端 利用微動開關
Material end using Micro-Switch

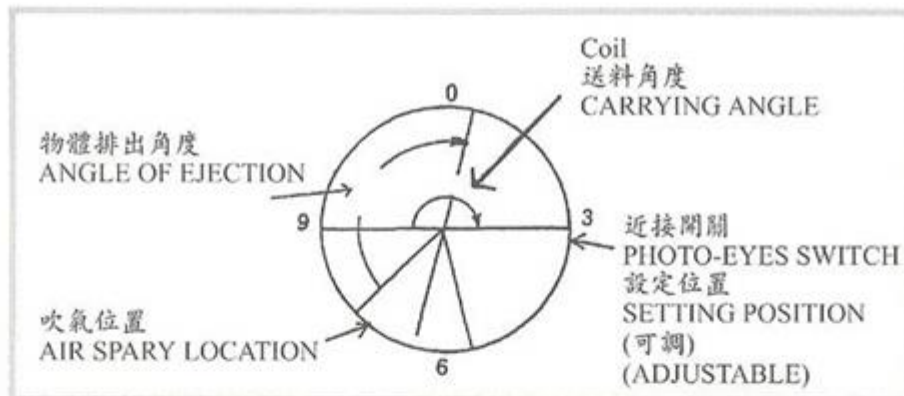


以彈簧棒檢出曲折擠料
Using Spring Bar to inspect tortuous material jammed

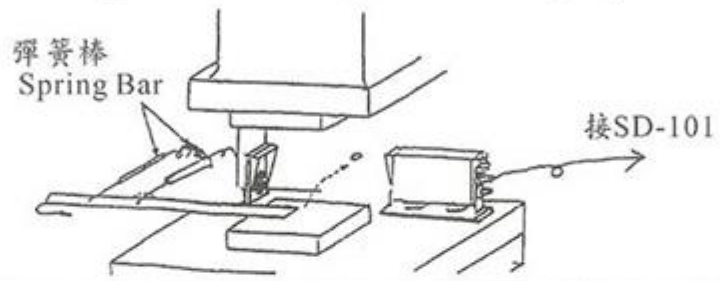


材料誤送 利用彈簧棒
Material error-carry using Spring Bar

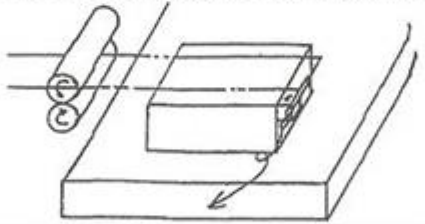




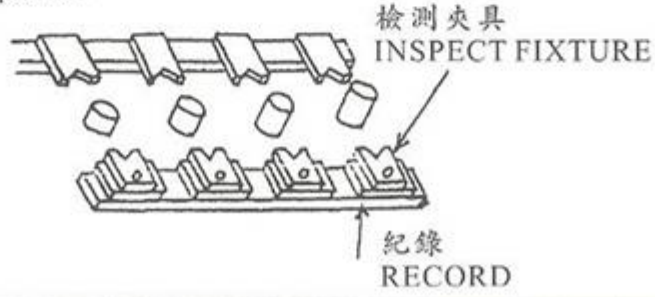
排出確認 利用SD-101或SD-201，光幕式通過檢測SENSOR
 Eject confirm using SD-101 or SD201, Photo Screening inspect sensor



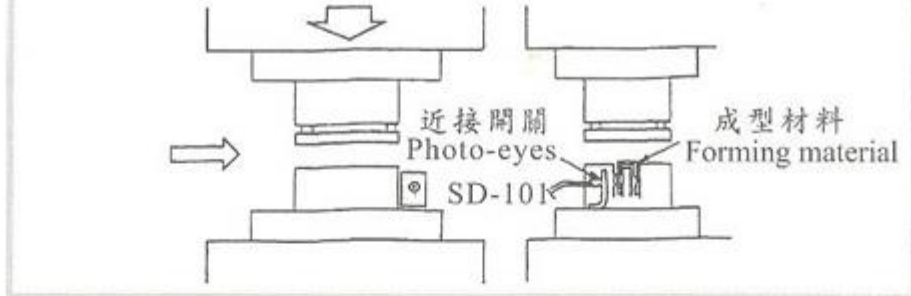
材料誤送 利用末端接地(檢測點製造模具時可裝上，須要紀錄方能使用)
 Material error0carry using bottom end grounded (inspect point may be installed, when the die developed, must record before used)



定位檢查
 Positioning inspection

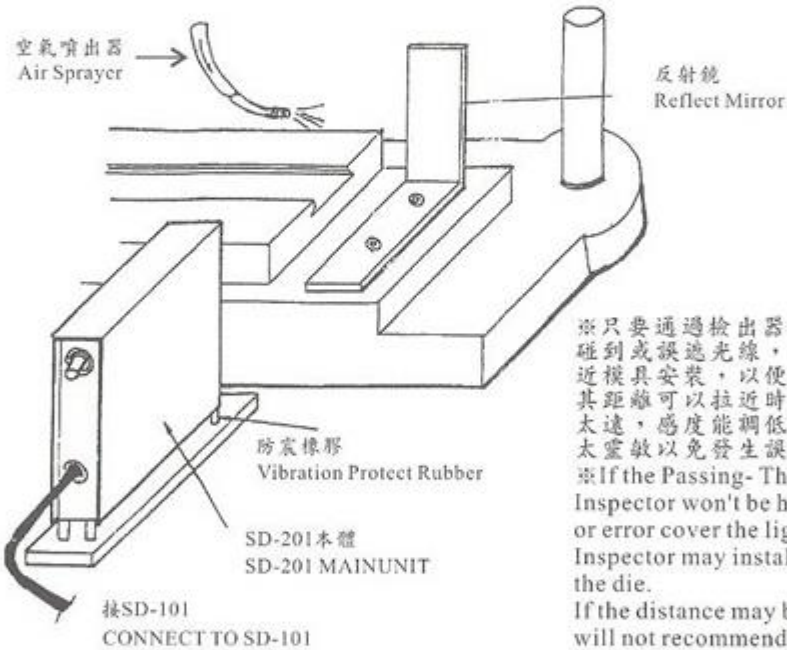


材料誤送或製品排出均可
For either material error-carry or working parts ejection



通過確認檢出器之應用例
Example of Passing- Through Inspector Application.

例：1
EX:1

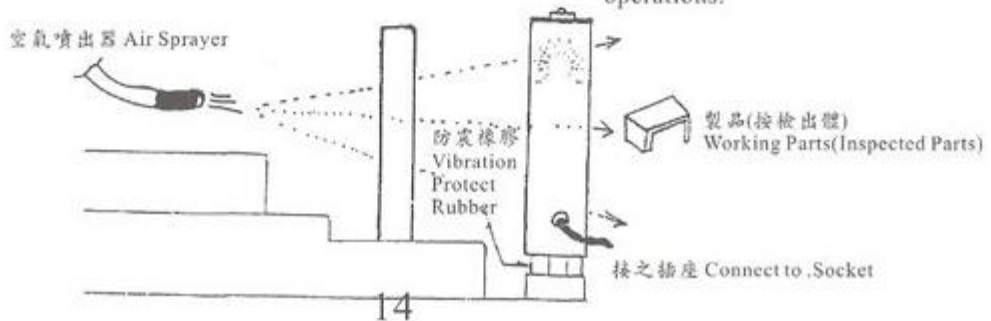


※只要通過檢出器不會被模具碰到或誤裝，其距離可以拉得太遠，感度太靈敏以免發生誤動作。

※If the Passing-Through Inspector won't be hit by the die or error cover the light then the Inspector may install closer to the die.

If the distance may be shorten, will not recommend to install to far away. If the sensitivity may be adjusted lower, will not recommend to set it as too sensitive to prevent the error operations.

例：2
EX:2



三. 產品規格

SD-101產品規格表

SD-101	
檢出回路	4CH. 獨立檢出
選擇切換	A/B 記憶/同期
反應時間	ON 檢出 3μ 、OFF 檢出 300μ 以下
使用電壓	AC 85V~240V、50/60Hz $\pm 10\%$
消耗電力	16W 以下
輸出信號	繼電器/A/B (220V 3A)
延遲時間	10ms 以內
周圍溫度	$0^{\circ}\text{C}\sim 40^{\circ}\text{C}$
輸入信號	DC12V、檢測裝置
標準配件	感測棒4枝
外形尺寸	175W*212L*100H
重 量	2.65kg

SD-101 Specification

SD-101	
Channel	4 channel individually
Switches	A/B, memory/synchro
Response time	"ON" check: 3μ OFF CHECK: $<300\mu$
Power	AC 110/220V 50/60Hz $\pm 10\%$
Power consumption	$<16\text{W}$
Output signal	Relay/A/B (220V 3A)
Delayed time	$1 < 10\text{mS}$
Applicable temperature	$0^{\circ}\text{C} \sim 40^{\circ}\text{C}$
nput Signal	DC12V, detecting device
Speed	2000 S P M
Dimension	175W*212L*100H
Weight	2.65kg

SD-201/202產品規格表

SD - 201/202	
檢出幅	SD-201最大150mm/SD-202最大100mm(紅外線偵測)
最小檢出	φ2mm(距離設定0.5m)不透明體
檢出距離	500mm 以內
電源電壓	DC 12V~24V(±10%)
消耗電力	60 mA 以下
輸出指示	(綠色)電源、紅色 (通過表示)
感度調整	依檢測物大小調整
周圍溫度	0°C~40°C
反應速度	1m sec 以下
連接線長	2.5M
外形尺寸	40W*210L*180H
重 量	本體 1.2kg 反射板 0.3kg

SD-201/202 Specification

SD - 201/202	
Checking amplitude	SD 201 150mm Max / SD 202 100mm Max
Minimum check	φ2mm(checking distance:0.5m) opacity
Checking distance	<500mm
Power	DC 12V~24V(±10%)
Power consumption	<60 mA
Indicating lamp	"Green" : Power, "Red" : Go
Sensibility	Adjusted by the shape of material and distance
Applicable temperature	0°C~40°C
Response speed	<1m sec
Length of joint cable	2.5M
Dimension	40W*210L*180H
Weight	Main unit :1.2kg, Reflective plate:0.3kg

四.產品標準配件

SD-102	
編號	標準配件名稱
SD1015	紅色偵測棒 4支 Detecting rod 4pcs
SD1017	六蕊訊號線及近接開關 1組 Proximity switch 1set
SD1018	預備凸輪線 1條 Length of joint cable 1pcs

